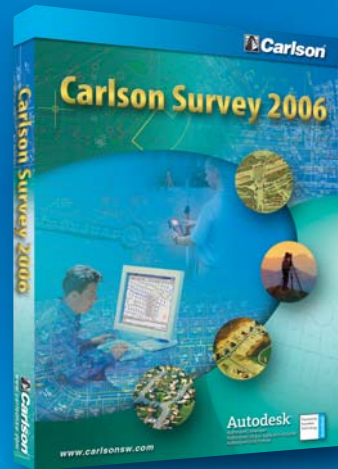


# Carlson® Survey 2006



# Carlson Survey 2006 – new improved performance with powerful AutoCAD® and SurvCADD® features

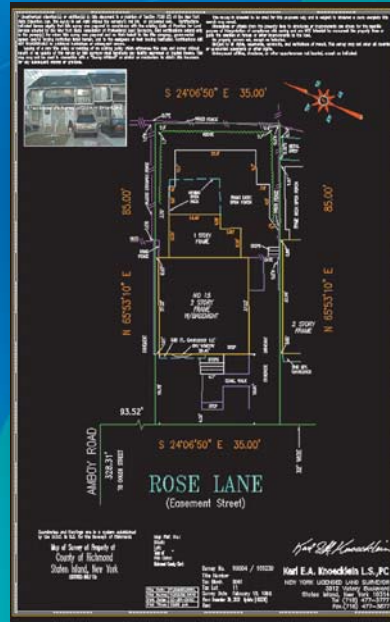


Carlson Survey 2006 improves this classic "win-win" application for the small survey and engineering firm. Carlson Survey 2006 incorporates core AutoCAD® and SurvCADD® features for the affordable price of \$1495. AutoCAD is the dominant CAD software for civil engineering and surveying but is sometimes beyond the

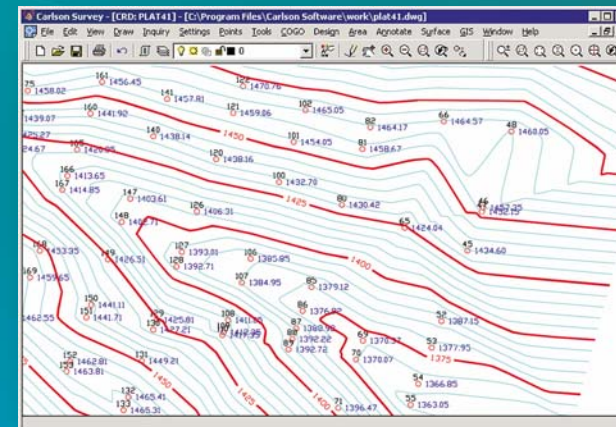
financial reach of smaller companies. Now you have the best of both worlds: a lower cost surveying solution and one that is fully AutoCAD compatible. Carlson Survey 2006 is the answer for that "extra," previously unaffordable work station or for the small firm wanting maximum, survey-focused value for the dollar.

## Key Features

- Reads all DWG and DXF files from R1 to present. Writes AutoCAD R2004, R2002 and R2000 DWG and DXF files.
- Downloads/Uploads all popular data collectors including our own Carlson SurvCE.
- Converts all RAW field data formats to the popular RW5 format for reduction.
- Spreadsheet editor with Least Squares, Compass, Crandall, Transit and Angle Balance.
- Field to Finish is unsurpassed in ease and office automation.
- Symbol Library contains hundreds of predefined symbols. Adding your own symbols is easy.
- Easiest and most powerful COGO in CAD.
- Plot deed descriptions property line/curves with labeling, points and closure results.
- Street intersection and Cul-De-Sac design.
- Footprint easy plotting for line plotting patios, walks, chimney, bay windows, etc.
- 2D/3D Polyline, Line, Arc commands by picking or point numbers.
- Legal descriptions, map check reports.
- Pre-determined area routines, lot layout by area/frontage with area labeling.
- Graphical offset and intersection calculations. Plot them in one easy step.
- Annotate lines and arcs, offsets, polylines to linetypes/corner symbols.
- Quickest, easiest contouring and volumes.
- Title block, legend, north arrow and bar scale plotting.
- Free Technical Support
- Visit [www.carlsonsw.com](http://www.carlsonsw.com) for a complete listing of new features and improvements.



All popular graphic formats can be inserted into Carlson Survey 2006



Quick and easy contouring

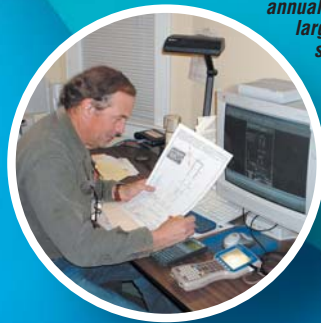


Large Boundary and Topographic Maps

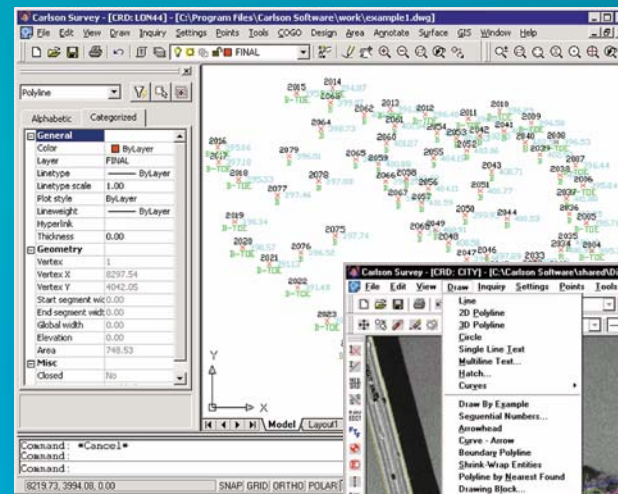
"We have three copies of Autocad with Carlson Software's civil package SurvCADD and one copy of Autodesk Field Survey. As a small office completing 700 to 1000 title surveys annually I was pleased to find out about Autodesk Field Survey. The AFS survey package developed by Carlson Software for Autodesk was the same survey software I've used for years in SurvCADD but for a fraction of the cost. I recently upgraded my AFS to Carlson Survey. I recommend Carlson Survey for any small, medium or large surveying firm."  
— Barry M. Fahrner Land Surveyor NY, RPLS



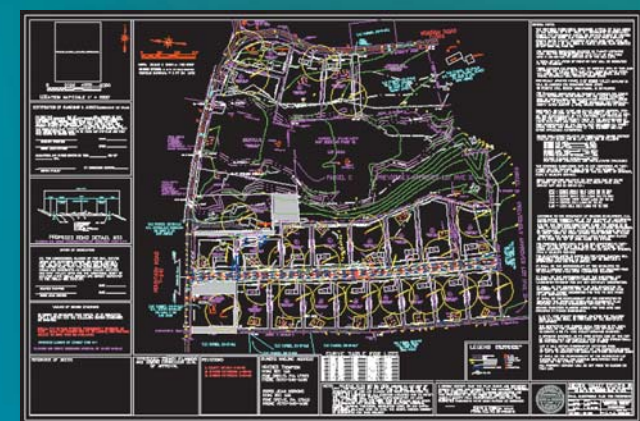
"I've been using Carlson Software products since 1986. My company's workload has grown tremendously while my staff has essentially remained the same over the years. To accomplish this growth I use Carlson Software for both electronic field data collection and in the office. Current workload includes over 600 title surveys annually. In addition we do numerous large topo and construction stake out surveys. Carlson Survey and Carlson SurvCE, running on the Allegro CE data collector, work together seamlessly to handle all our jobs."  
— Karl Knoecklein, NY, RPLS



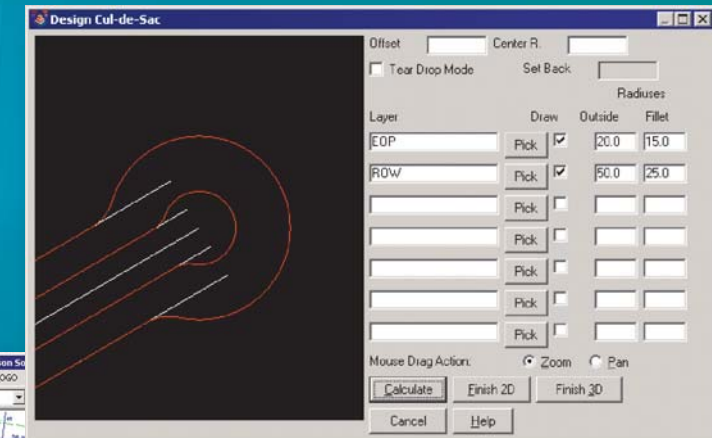
"I use Carlson Software products both in the field and office. I currently have Carlson SurvCE data collectors and a Carlson Software Tsunami CAD data collection package running conventional, robotic total stations and RTK GPS. I use heavily the "Profile to Points" road stakeout and "Culsheet" routines in Carlson Survey. The ability for cutsheets to be formatted and exported directly to Microsoft Excel spreadsheets is fantastic. With one full-time two man field crew and myself it is remarkable the work my small survey firm completed."  
— Shawn Donohue, PA, RPLS



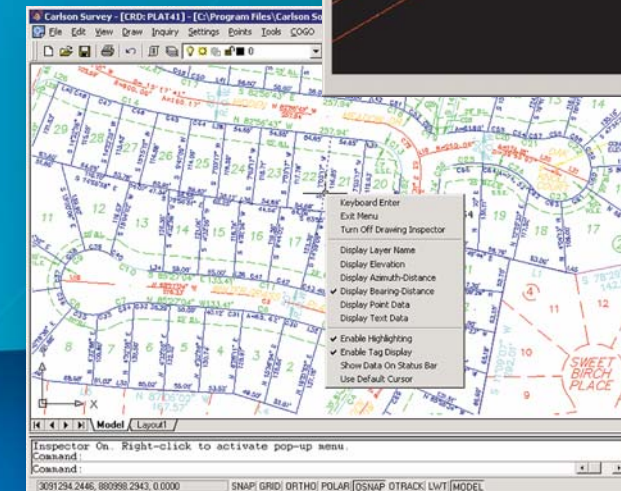
Imported raster images can be scaled and survey points and mapping drawn and plotted with the image



Submit better looking plats in less time



Quick and easy Lot Layout with automated Cul-De-Sac design



Autodesk  
Authorized Developer  
Authorized Unique Application Reseller  
Authorized OEM Partner



[www.carlsonsw.com](http://www.carlsonsw.com)

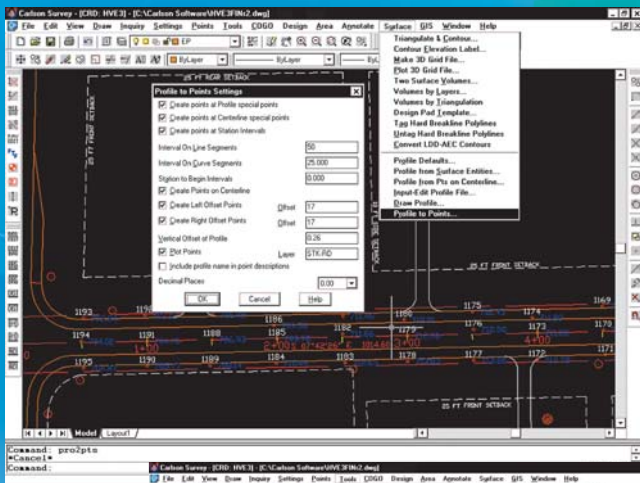
Call for a free demo disk and see why we have the most loyal customers in the industry.

## Carlson Software Products

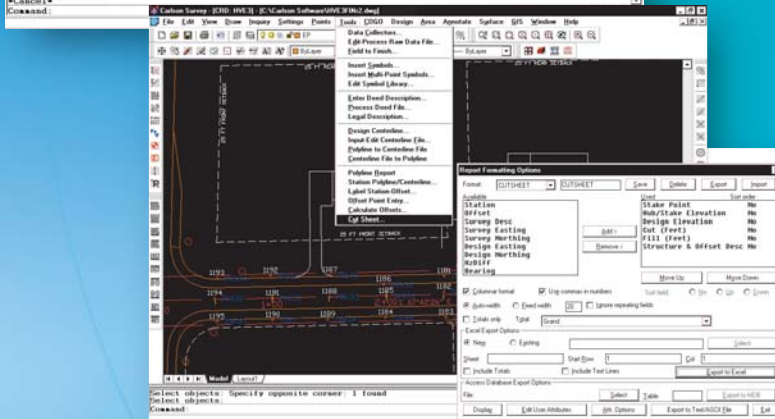
### Pricing

- Carlson Survey 2006 \$1495
- Carlson Survey 2006 upgrade from Carlson Survey 2004 \$395
- Carlson Survey 2006 upgrade from Autodesk Field Survey \$795
- Carlson Survey 2006 upgrade from Carlson Survey XML \$595
- Carlson Survey 2006 upgrade from Carlson Survey CES/98/99 \$995

**Free  
Technical  
Support**



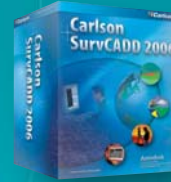
**Construction  
Stakeout and  
Volume  
Calculations**



FAX: (570) 754-9037

ALL STK ARE FG. CHECKED BY: SMD Date: 11-26-02. ALL CUTS ARE FROM TOP OF STK

STAKE POINT	HUB/STAKE ELEVATION	DESIGN ELEVATION	CUT (FEET)	FILL (FEET)	STRUCTURE & OFFSET DESCRIPTION
1064	706.31	701.7	4.61		*15
1065	705.02	701.7	3.32		*15
L=60 S=01 FT 15" ADS					
1066	709.22	702.7	6.52		*15
1067	709.57	702.7	6.87		*15
1058	710.24	705.61	4.63		*15
1059	709.26	705.61	3.65		*15
L=83 S=01 FT 24" ADS					
1060	713.7	709.83	3.87		*15 CL CB



**Carlson SurvCADD 2006**  
Modular by design to make a complete land development solution. Works with AutoCAD® and AutoCAD® Map.



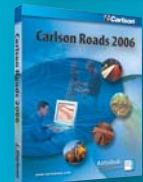
**Carlson SurvCE**  
Data collection for Windows CE and Pocket PC. Supports all major manufacturers' conventional and robotic total stations and RTK-GPS systems.



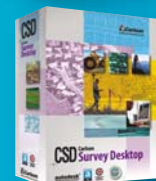
**Carlson Explorer**  
The Carlson Explorer combines state-of-the-art hardware, powered with Carlson SurvCE, for the most powerful and easy to use data collection package starting at only \$1795.



**Carlson Field 2006**  
CAD-based data collection! Collect data directly in a DWG file. No download into CAD needed!



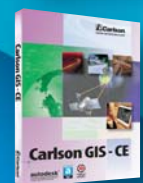
**Carlson Roads 2006**  
Road design made easy. From simple subdivision streets to super elevated highway design.



**Carlson Survey Desktop**  
A complete set of easy-to-use survey tools for the acclaimed Autodesk Land Desktop.



**Carlson SurvNET**  
True network least squares. Can be used in conjunction with our other survey packages or as a stand-alone application.



**Carlson GIS-CE**  
GIS GPS data collection. Store multiple attributes for each shot quickly and easily.