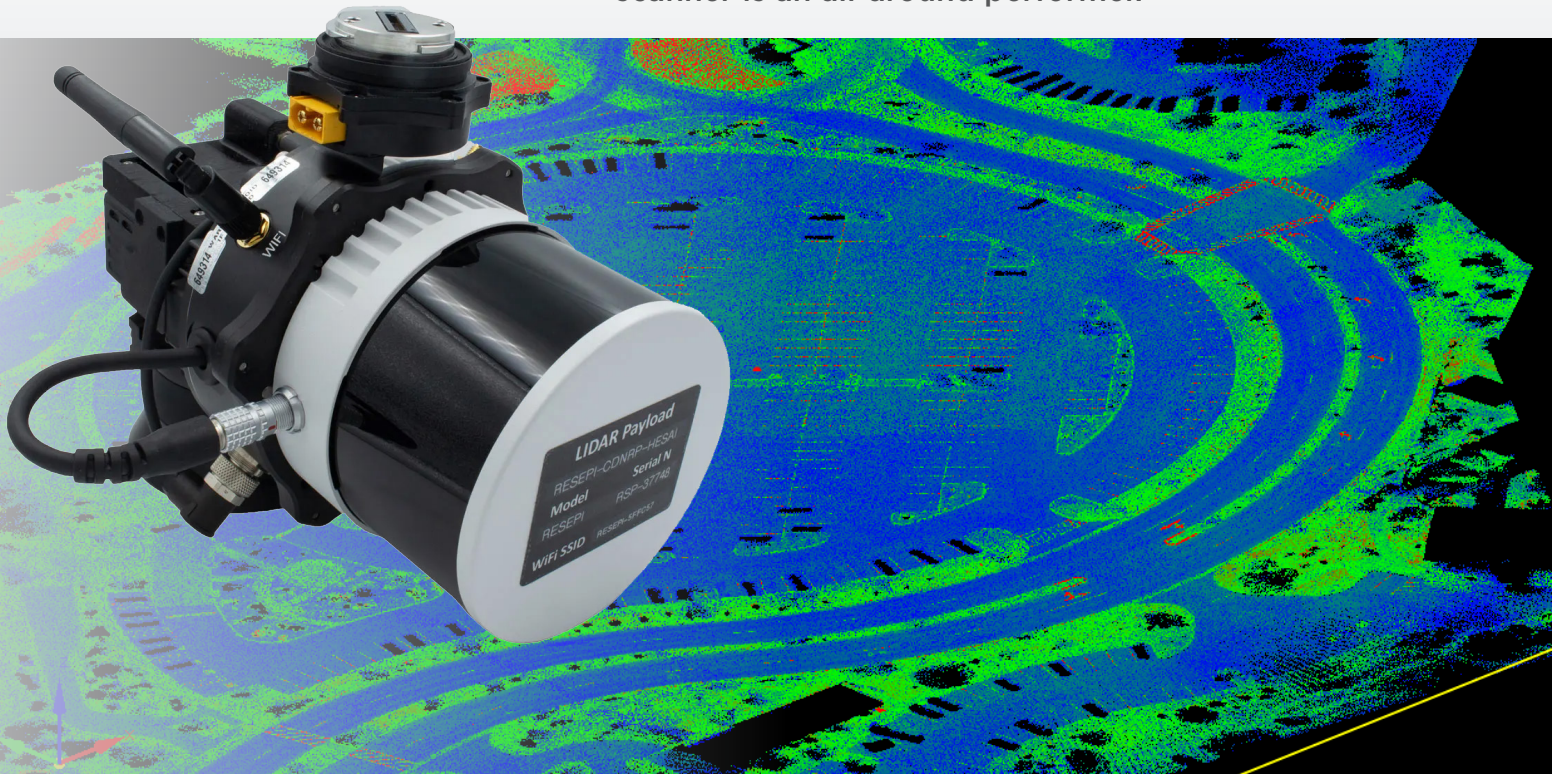


Offering the benefits of best-in-class data accuracy, good detection range, high point density, and versatility, this compact and light-weight LiDAR scanner is an all-around performer.

LiDAR Solution



System

System Vertical Accuracy (5m/s@50m)	±3cm
Recommended AGL	50-100m
External Storage	256GB USB Included

LiDAR

Laser Range	80m @ 10% (c9-24) 50m @ 10% (c1-8, 25-32) 0.05 to 120m
Range Accuracy	± 1 cm
Number of Lasers	32
Number of Returns	2
Pulse Rate	640k/s (single return) 1280k/s (dual return)

RGB Camera

Model	ADTi 24MP RGB
Lens	Sony E-Mount 16mm, 70° FOV

GPS-Aided Inertial Navigation

IMU	Yes
GNSS Antenna	Yes
GNSS Constellations	GPS, GLONASS, BEIDOU, GALILEO
Position accuracy	1cm+1ppm (RTK) 0.5cm (PPK)

Software (Post Processing)

Includes PCMasterGL	
Includes PCPainterGL	

